

野火_EBF6ULL S1 Pro 底板

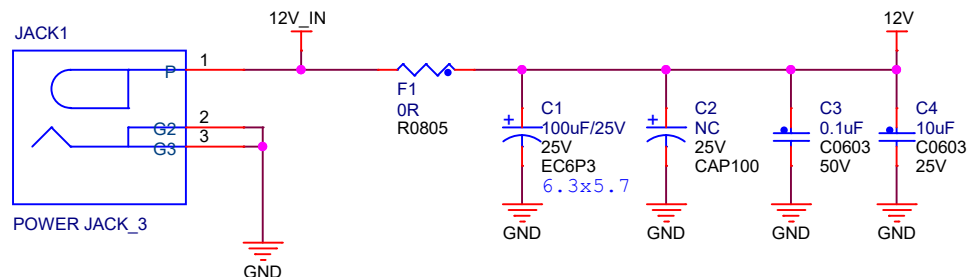
目录

Page 1	目录
Page 2	历史版本
Page 3	电源
Page 4	板对板连接器
Page 5	引出IO
Page 6	WIFI&Bluetooth
Page 7	CAN/RS485
Page 8	串口 (RS232/TTL/USB转串口)
Page 9	SD卡/摄像头/光纤
Page 10	以太网x1
Page 11	以太网x2
Page 12	传感器/按键/LED
Page 13	音频
Page 14	USB HOST/USB OTG
Page 15	RGB转LVDS
Page 16	RGB转HDMI
Page 17	HDMI连接器
Page 18	扩展IO/启动切换

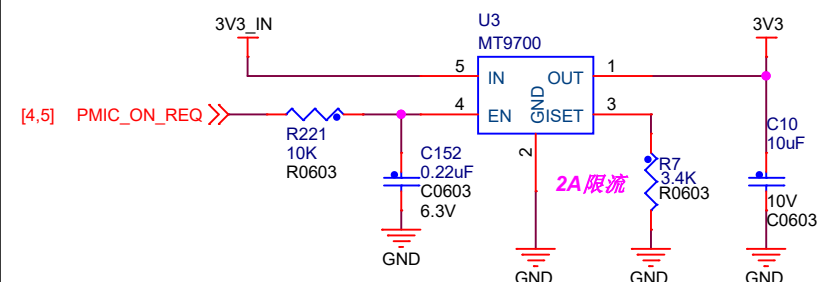
历史版本

版本号	日期	设计	描述
V0.1	2019-06-20	ZWC	初始版本，开发阶段
V1.0	2019-08-15	ZWC	整理对外发布，稳定版
V1.1	2020-02-24	ZWC	1.MINI USB接口改为TYPE C接口 2.WIFI的SD CLK通过跳帽选通，解决SD卡的兼容性问题 3.触摸按键增加触摸IC 4.修改电源开关

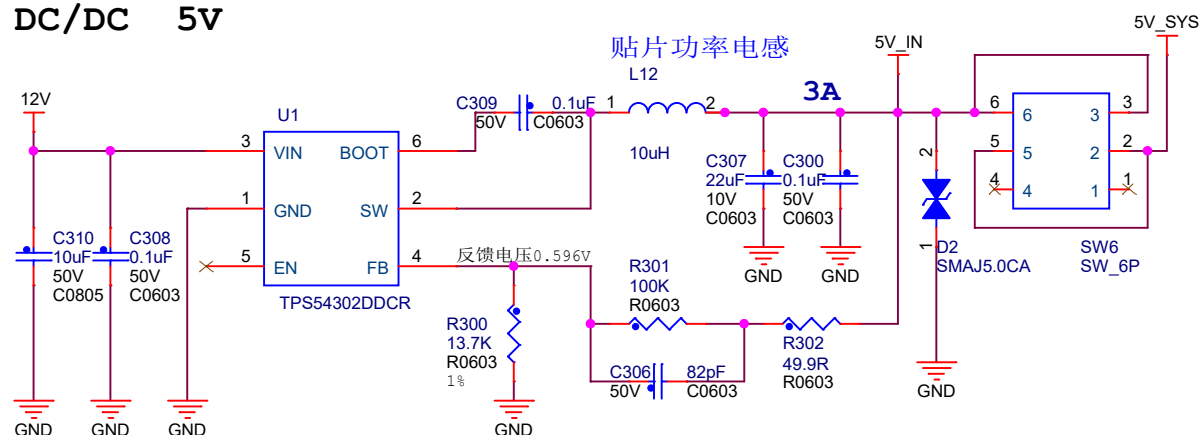
DC IN : 12V



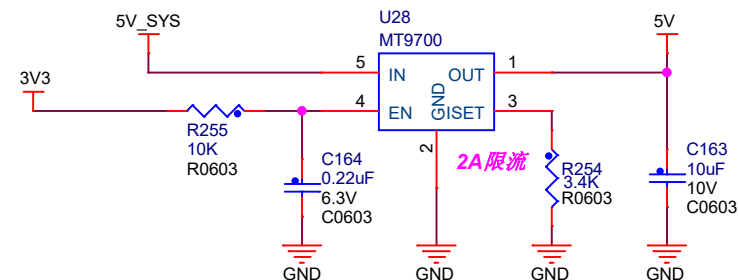
3.3V 输出控制及过流保护



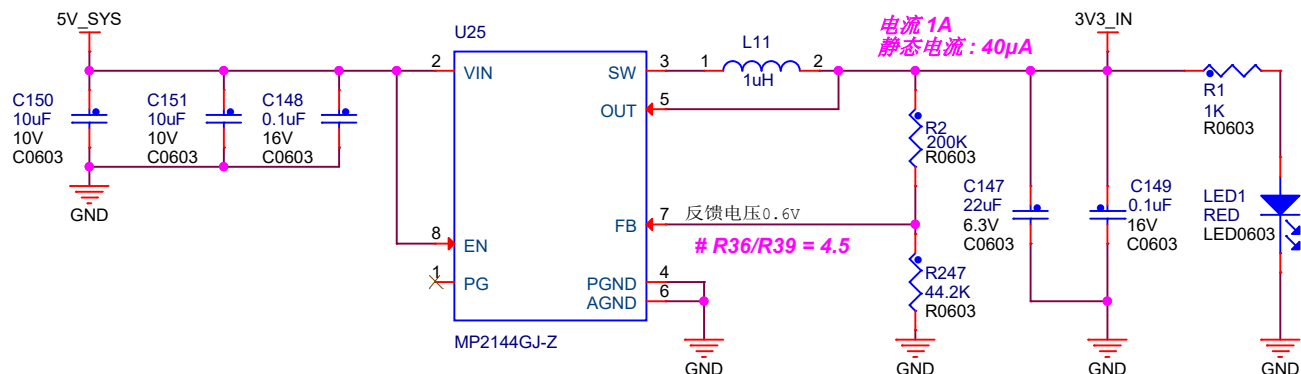
DC/DC 5V



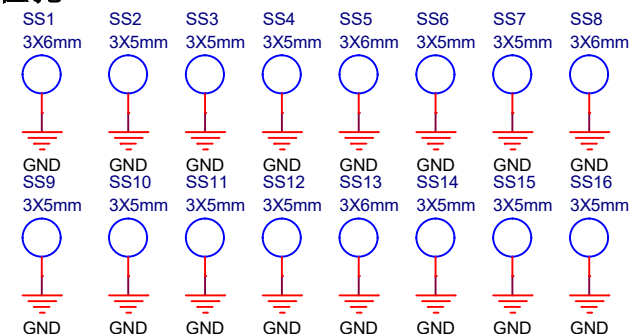
5V输出控制及过流保护



5V转3.3V



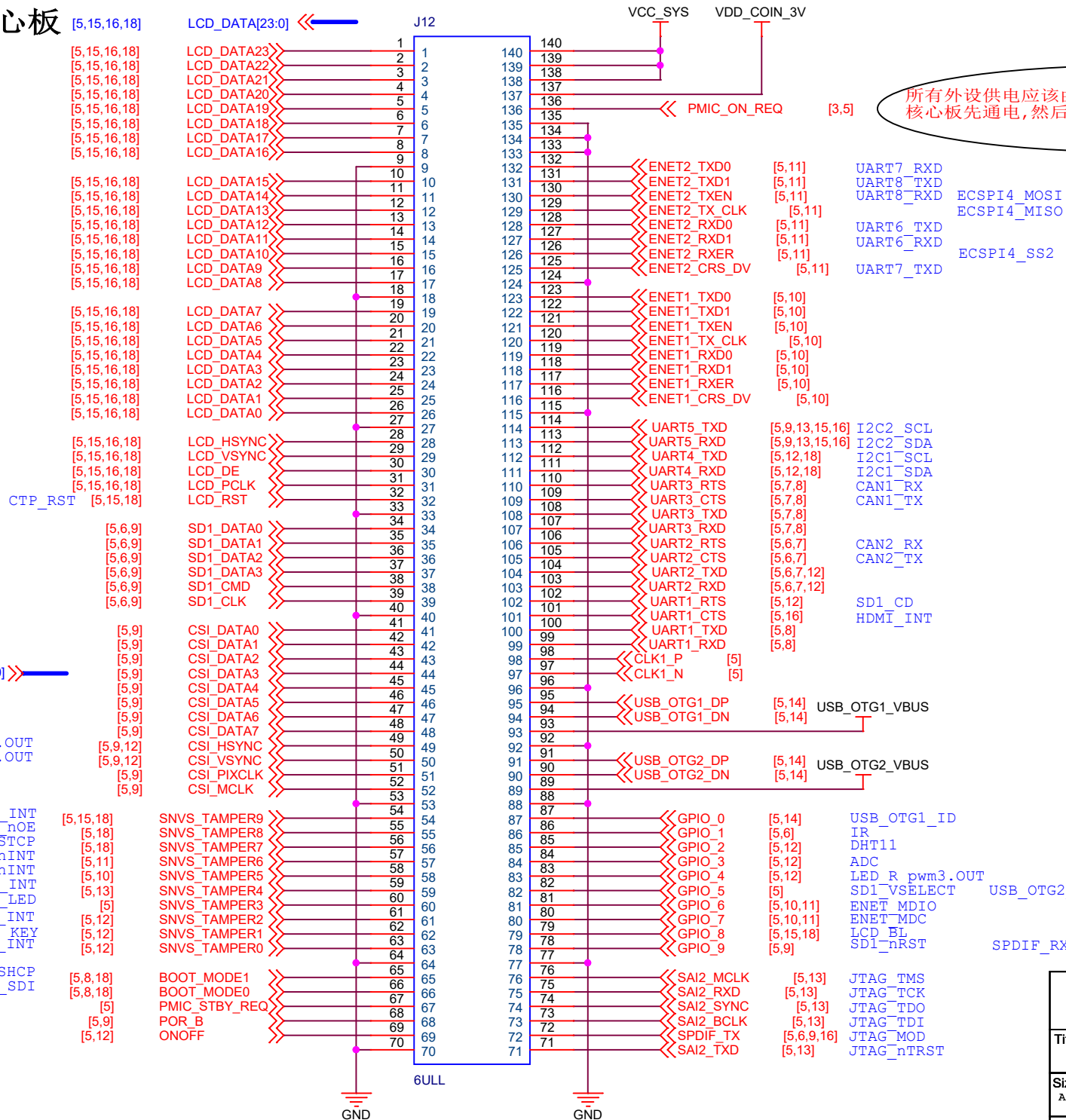
定位孔



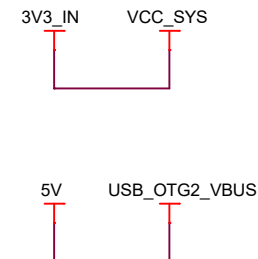
东莞野火电子技术有限公司
https://fire-stm32.taobao.com

Title		
野火_EBF6ULL S1 Pro 底板		
Size A4	Document Number 电源	Rev V1.0
Date: Friday, November 12, 2021	Sheet 3	of 18

邮票孔核心板 [5,15,16,18]



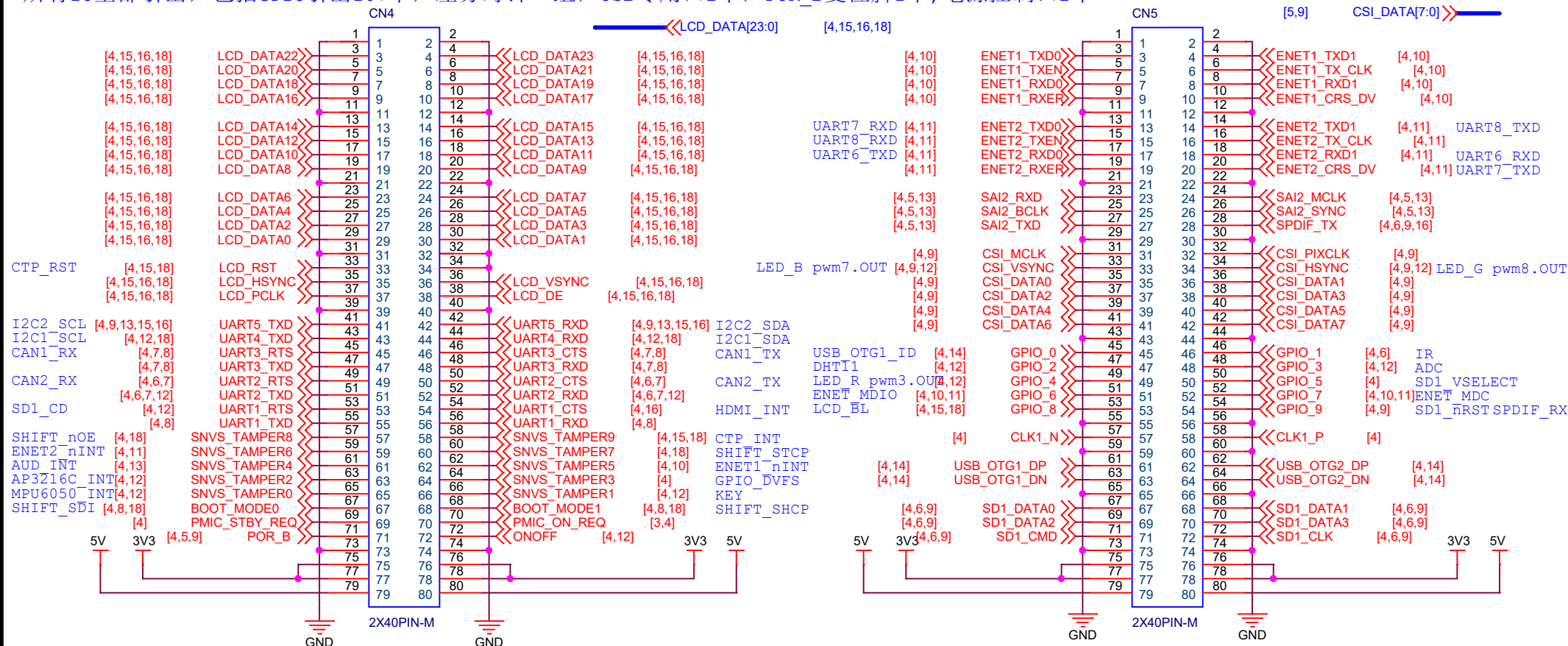
所有外设供电应该由PMIC_ON_REQ控制，
核心板先通电，然后PMIC_ON_REQ输出高控制外设供电



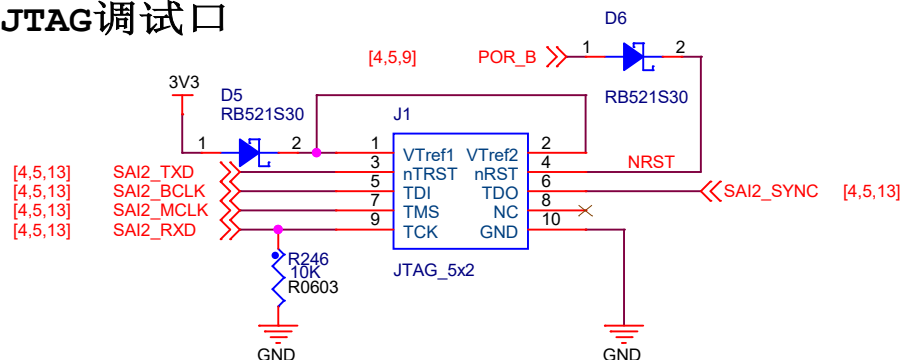
GPIO 5为专用IO不能用作其他用途

引出IO口(排针)

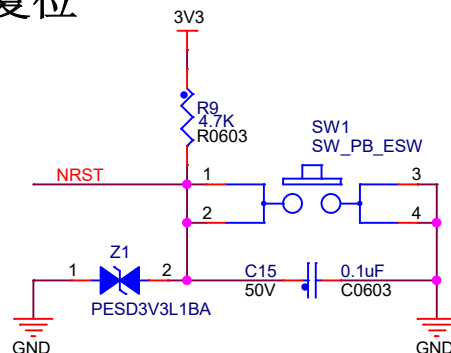
所有IO全部引出, 包括GPIO引出107个, 差分时钟一组, USB专用口2个, POR_B复位脚1个, 电源控制口2个



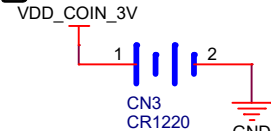
JTAG调试口



复位



RTC电池

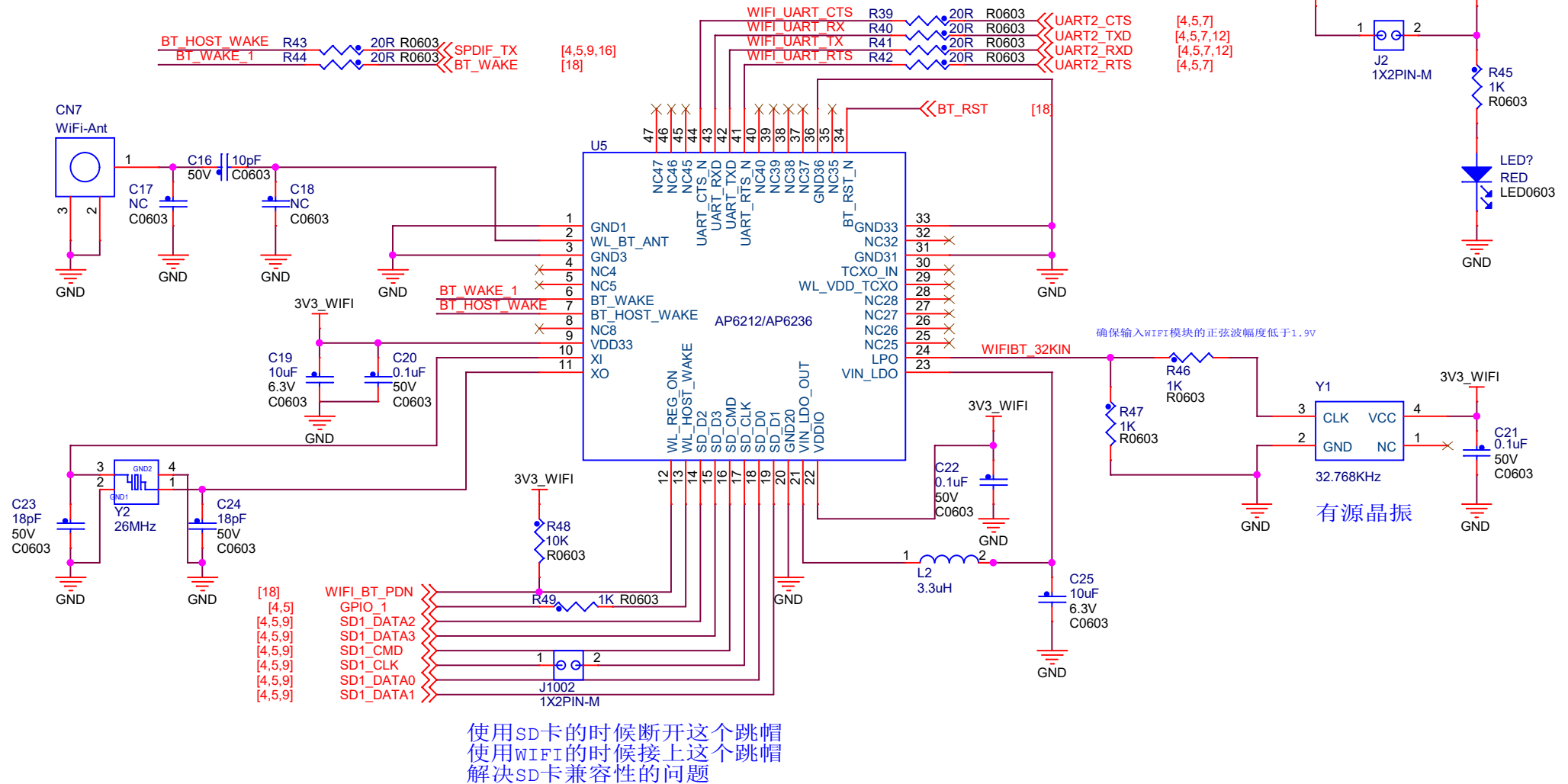


东莞野火电子技术有限公司
<https://fire-stm32.taobao.com>

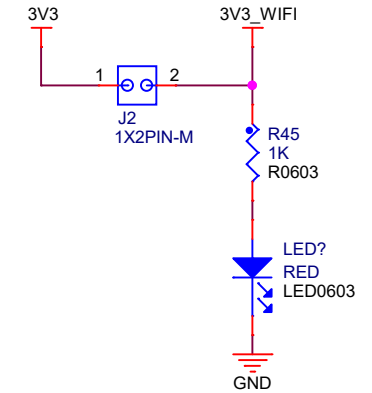
Title		
野火_EBF6ULL S1 Pro 底板		
Size	Document Number	Rev
A4	引出IO	V1.0
Date:	Tuesday, March 08, 2022	Sheet 5 of 18

WIFI&Bluetooth

与SD卡共用SDIO接口，因此WIFI跟SD卡不能同时使用



WIFI电源指示灯

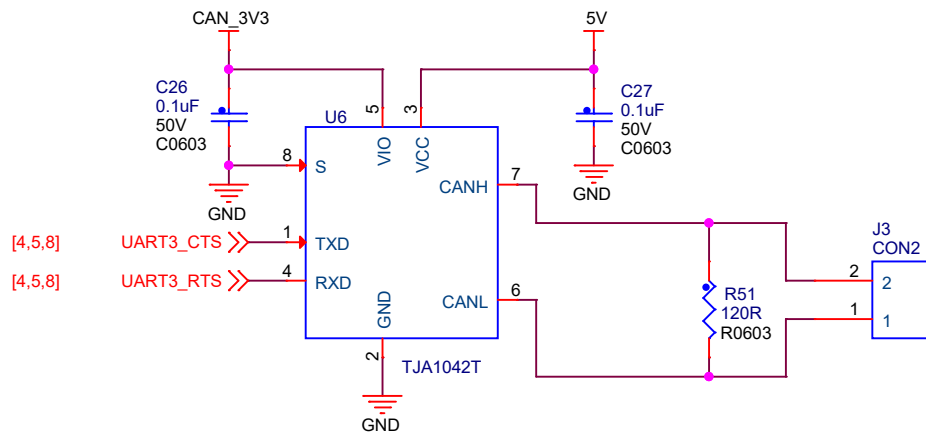


确保输入WIFI模块的正弦波幅度低于1.9V

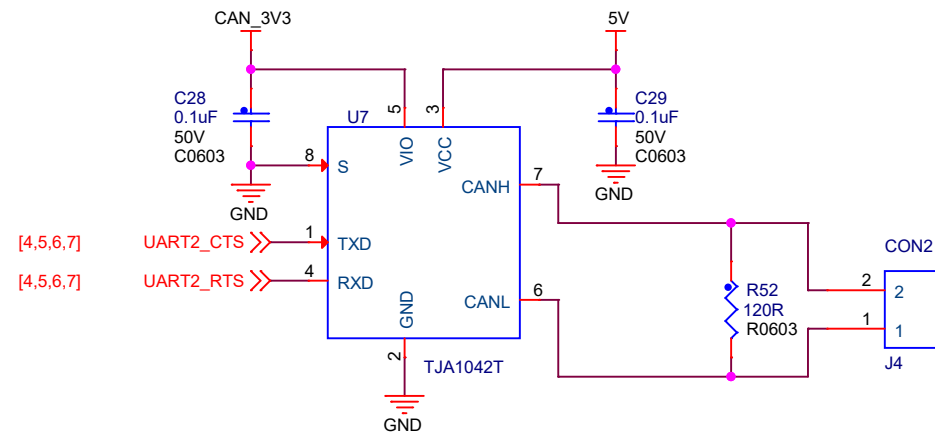
有源晶振

东莞野火电子有限公司 https://fire-stm32.taobao.com		
Title 野火_EBF6ULL S1 Pro 底板		
Size A4	Document Number WIFI&Bluetooth	Rev V1.0
Date: Tuesday, March 08, 2022	Sheet 6 of 18	

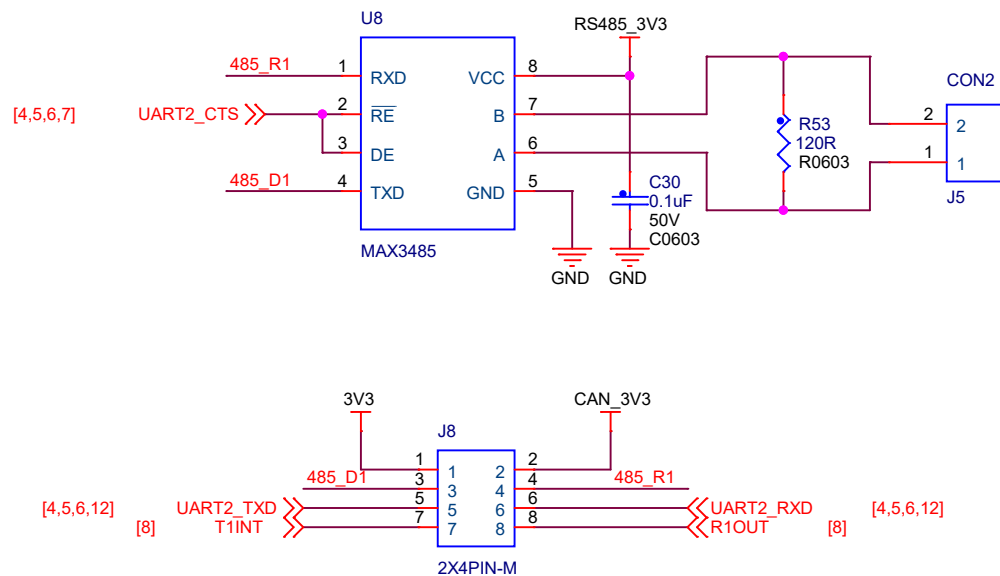
CAN1



CAN2

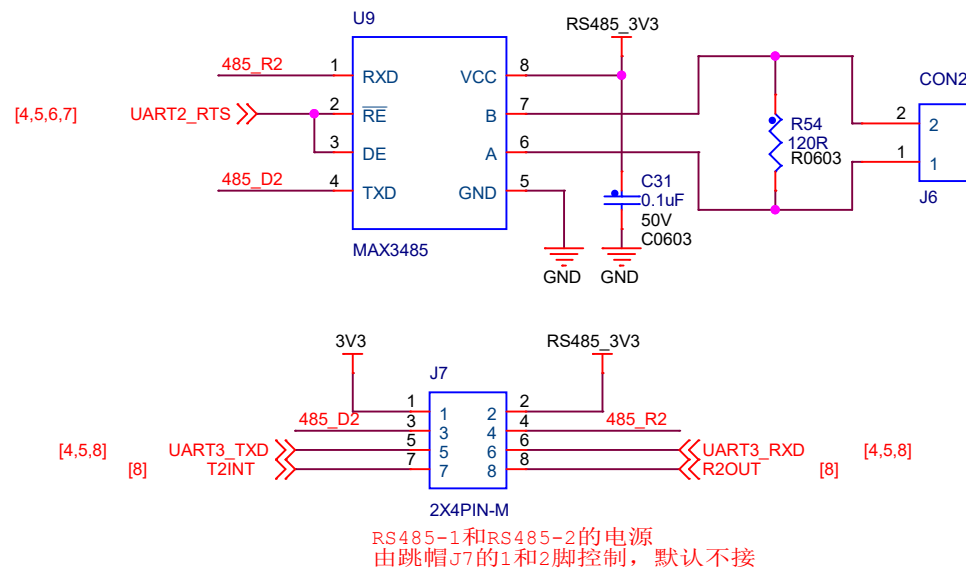


RS485-1



CAN1和CAN2的电源
由跳帽J8的1和2脚控制，默认不接

RS485-2



东莞野火电子技术有限公司
<https://fire-stm32.taobao.com>

Title

野火_EBF6ULL S1 Pro 底板

Size
A4

Document Number

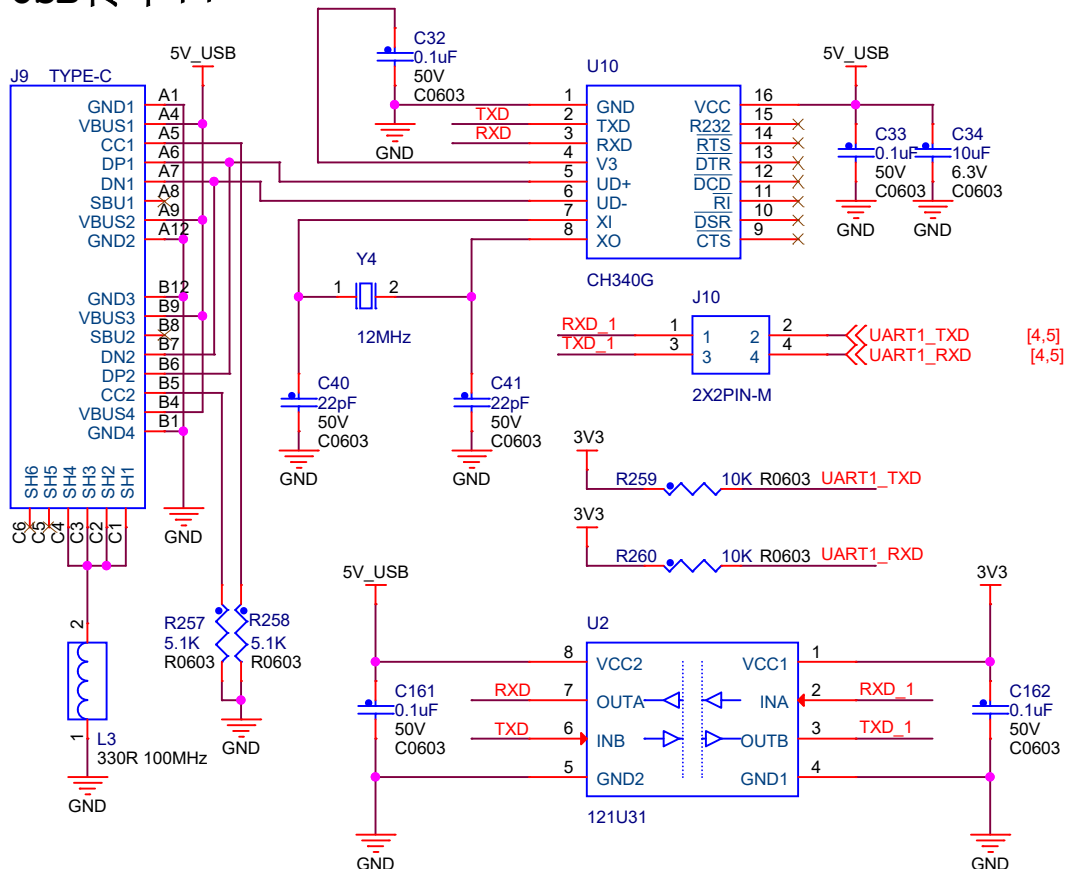
CAN/RS485

Rev
V1.0

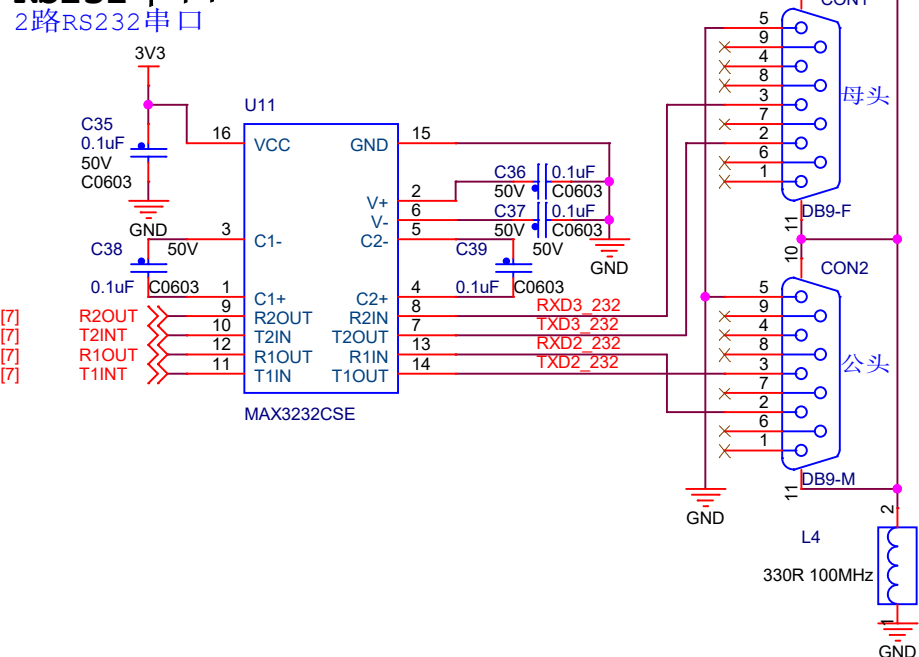
Date: Friday, November 12, 2021

Sheet 7 of 18

USB转串口

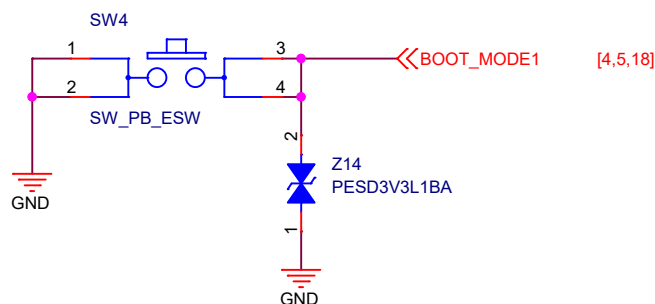


RS232串口



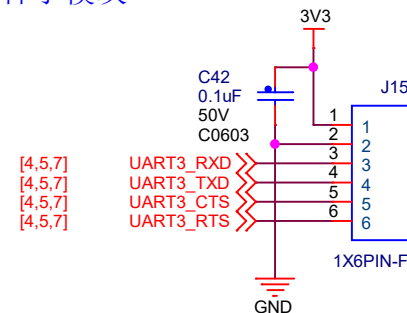
串行烧录启动切换

按下按键再复位即可进入串行烧录模式



EBF-Module

用于接野火的各种小模块

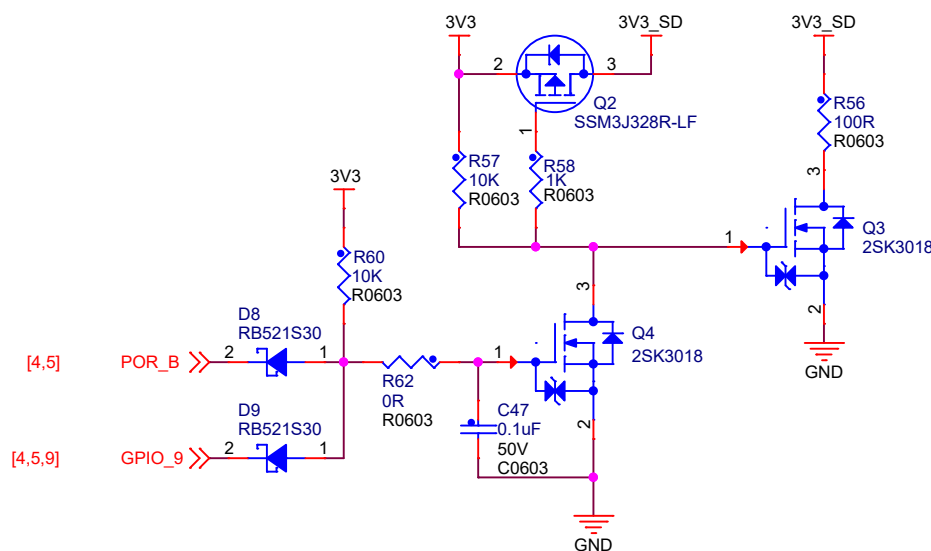
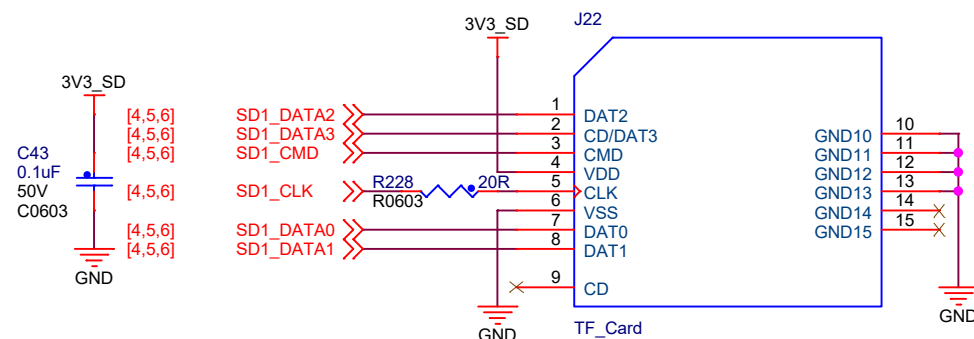


东莞野火电子有限公司
https://fire-stm32.taobao.com

Title		
野火_EBF6ULL S1 Pro 底板		
Size A4	Document Number 串口(RS232/TTL/USB转串口)	Rev V1.0
Date: Saturday, November 13, 2021	Sheet 8	of 18

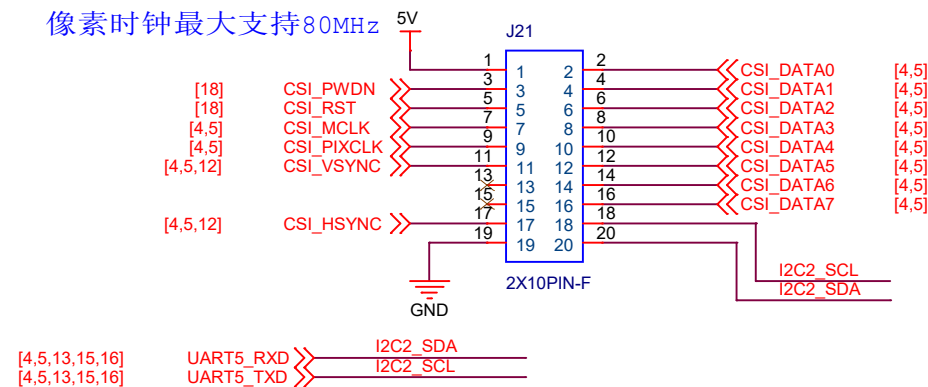
SD卡

与WIFI复用SDIO引脚

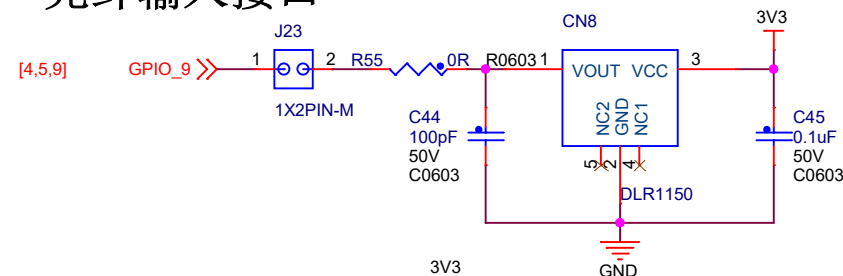


摄像头接口

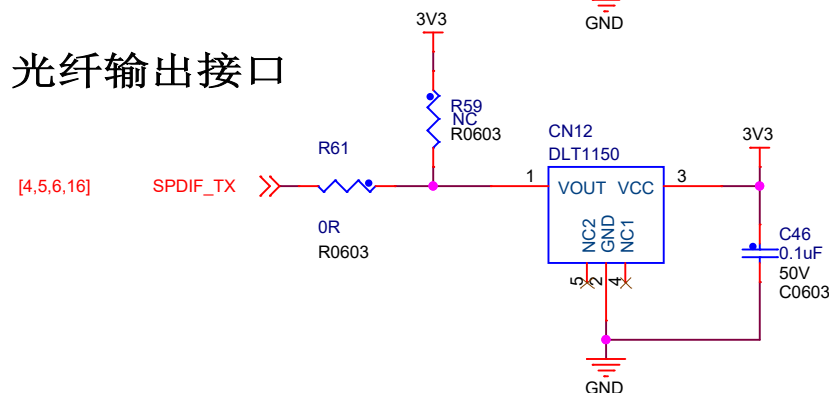
像素时钟最大支持80MHz



光纤输入接口



光纤输出接口



东莞野火电子技术有限公司
https://fire-stm32.taobao.com

Title

野火 EBF6ULL S1 Pro 底板

Size
A4

Document Number

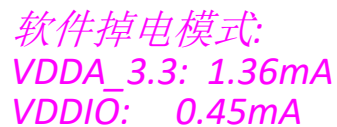
SD卡/摄像头/光纤

Rev	
V1.0	

Date: Friday, November 12, 2021

Sheet 9 of 18

千兆以太网PHY



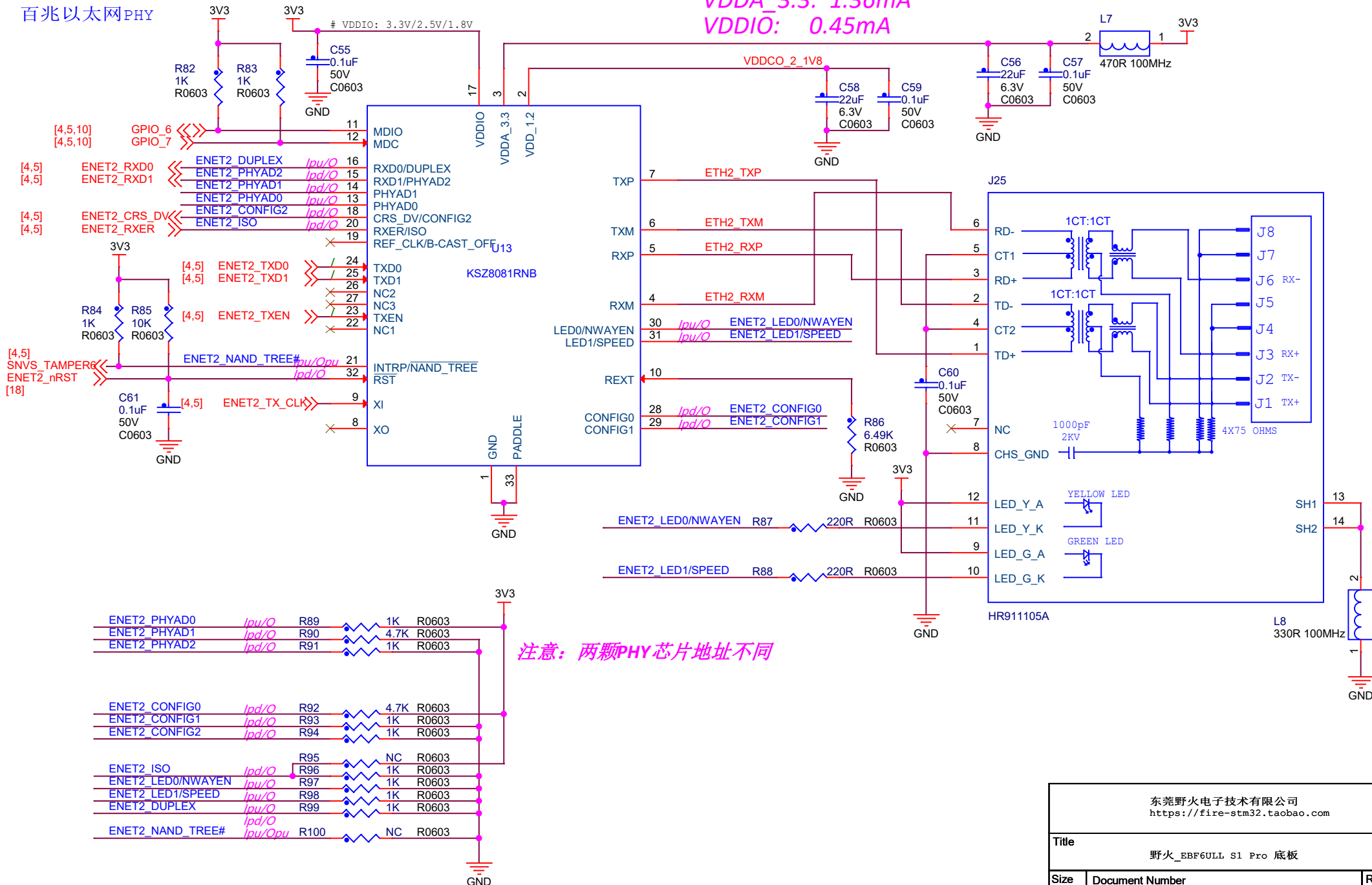
注意：两颗PHY芯片地址不同

<p>东莞野火电子技术有限公司 https://fire-stm32.taobao.com</p>		
<p>Title</p> <p>野火_EBF6ULL S1 Pro 底板</p>		
<p>Size</p> <p>A4</p>	<p>Document Number</p> <p>以太网x1</p>	<p>Rev</p> <p>V1.0</p>
<p>Date:</p>	<p>Friday, November 12, 2021</p>	<p>Sheet 10 of 18</p>

以太网接口2

百兆以太网PHY

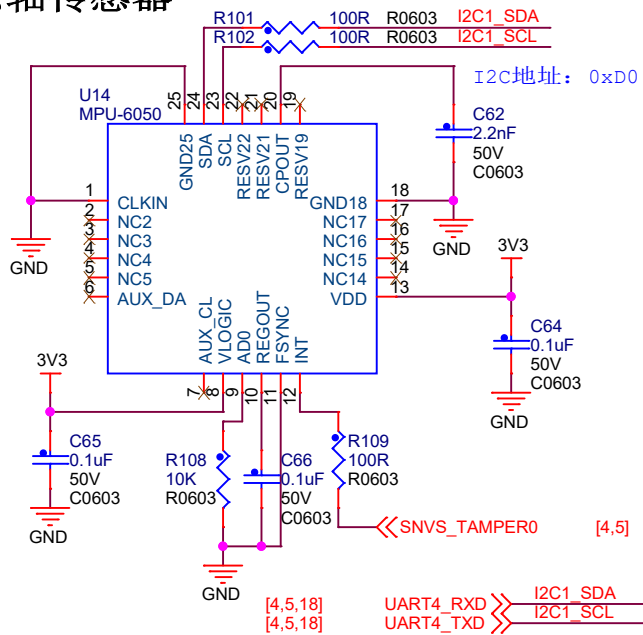
软件掉电模式:
VDDA_3.3: 1.36mA
VDDIO: 0.45mA



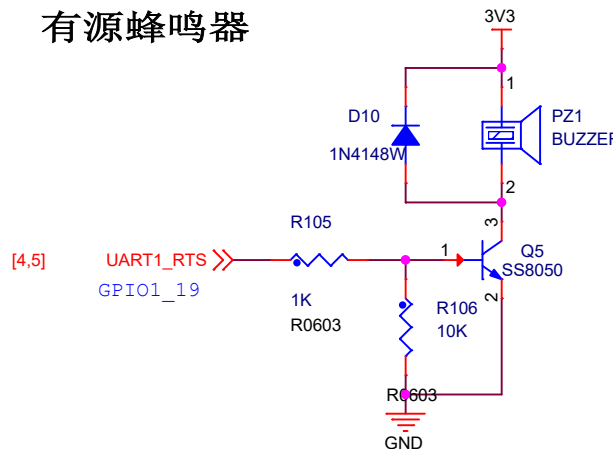
东莞野火电子有限公司
<https://fire-stm32.taobao.com>

Title 野火_EBF6ULL S1 Pro 底板		
Size A4	Document Number 以太网x2	Rev V1.0
Date: Friday, November 12, 2021	Sheet 11	of 18

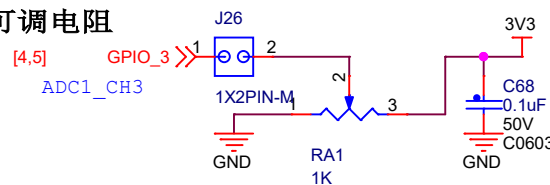
六轴传感器



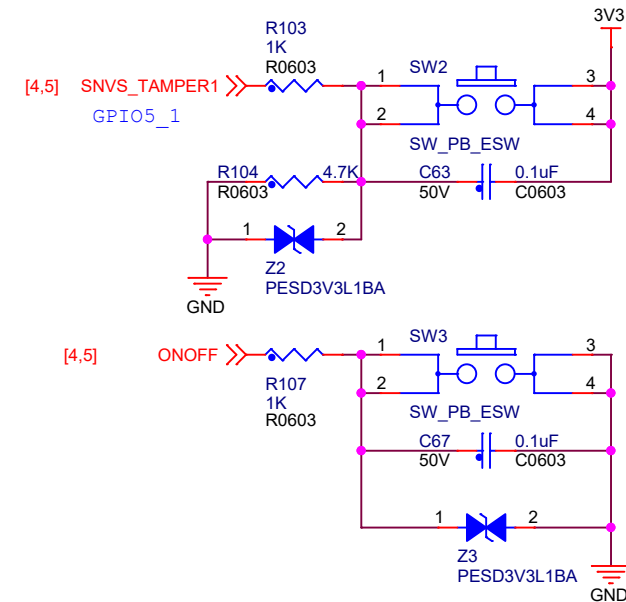
有源蜂鸣器



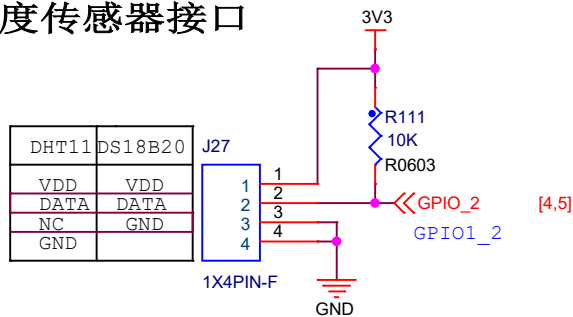
可调电阻



按键 长按SW3按键可以实现开关机

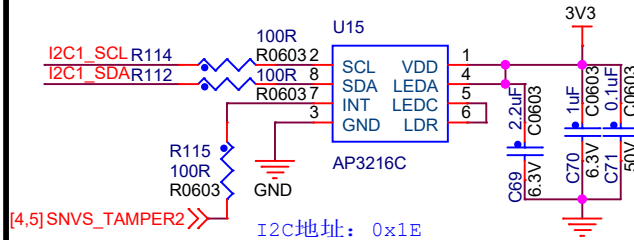


温湿度传感器接口

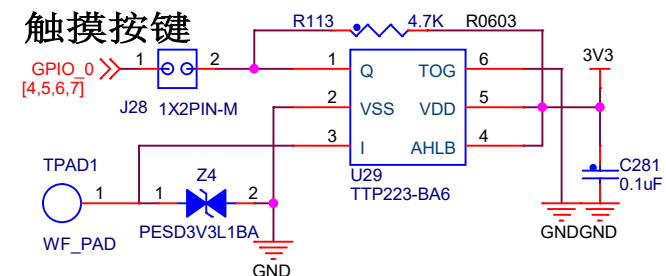


ALS+PS+IRLED (三合一)

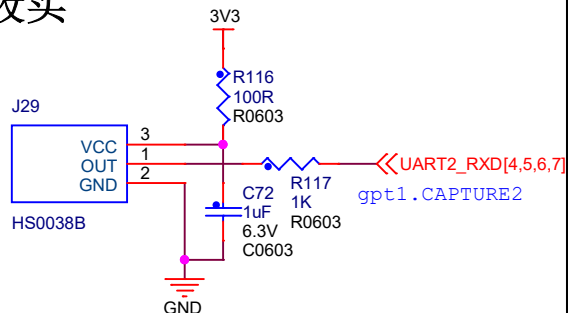
环境光传感器、接近传感器、红外LED三合一



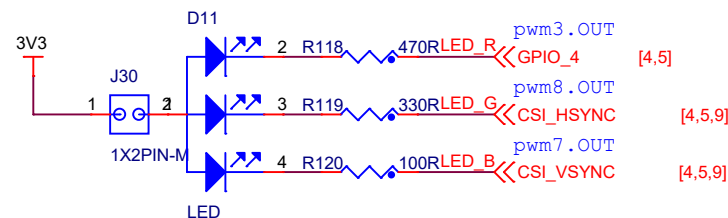
触摸按键



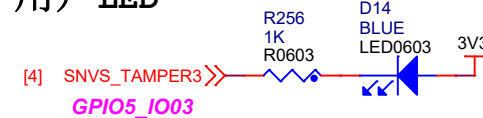
红外接收头



彩色LED



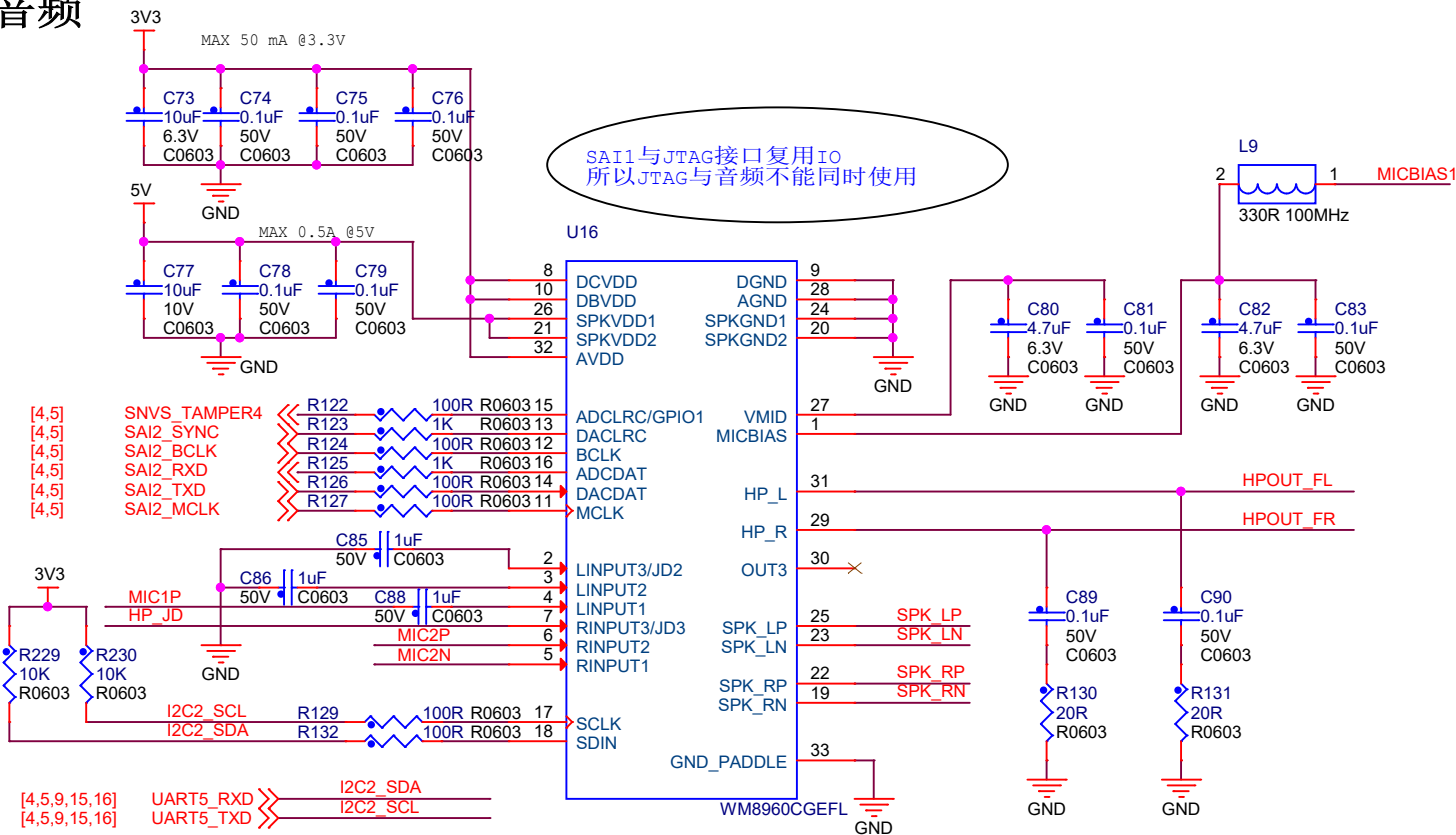
用户LED



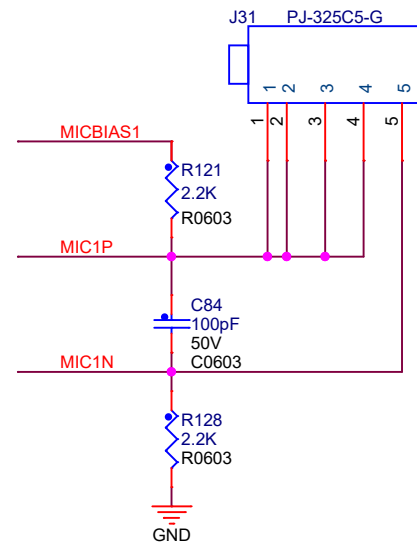
东莞野火电子技术有限公司
https://fire-stm32.taobao.com

Title 野火_EBF6ULL S1 Pro 底板		
Size A4	Document Number 传感器/按键/LED	Rev V1.0
Date: Saturday, November 13, 2021	Sheet 12 of 18	

音频

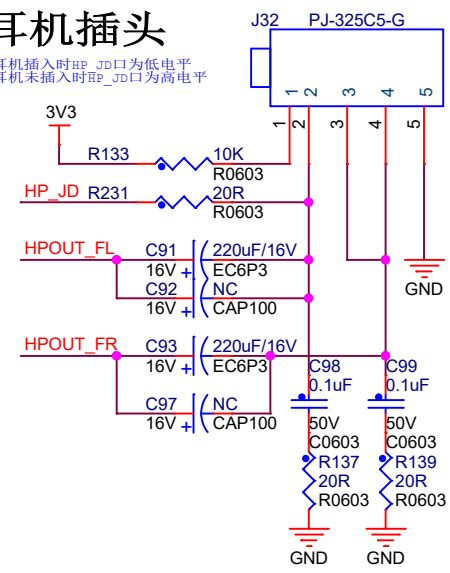


MIC插头

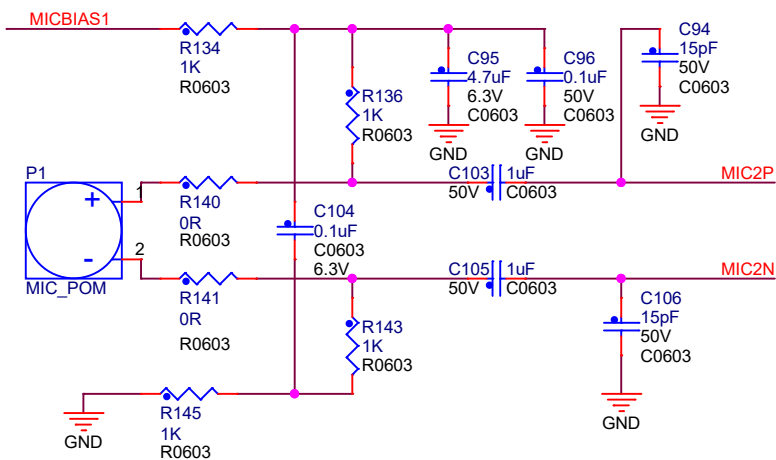


耳机插头

耳机插入时HP_JD口为低电平
耳机未插入时HP_JD口为高电平

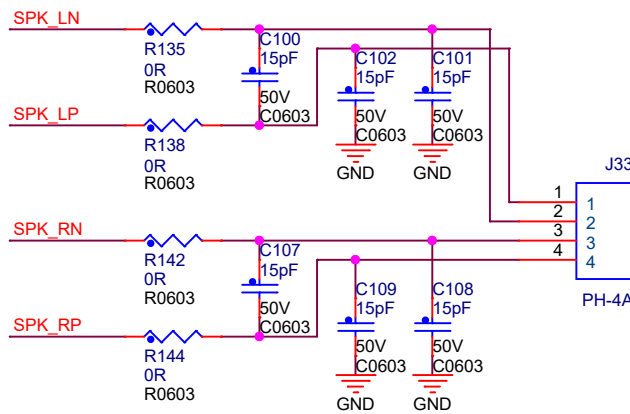


MIC



喇叭插座

可以驱动2个8Ω 1W的喇叭 (BTL方式)



东莞野火电子技术有限公司
<https://fire-stm32.taobao.com>

Title		
野火_EBF6ULL S1 Pro 底板		
Size	Document Number	Rev
A4	音频	V1.0
Date:	Friday, November 12, 2021	Sheet 13 of 18

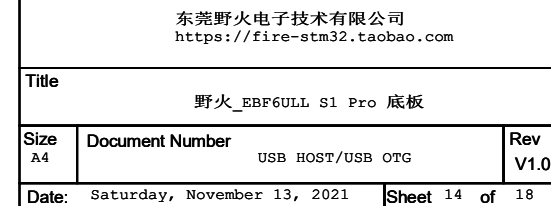
C



A



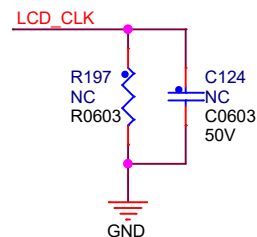
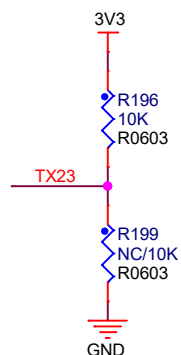
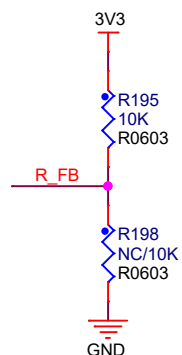
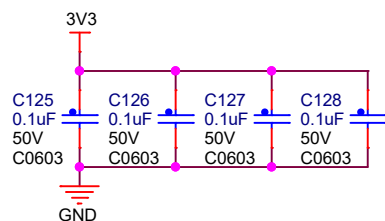
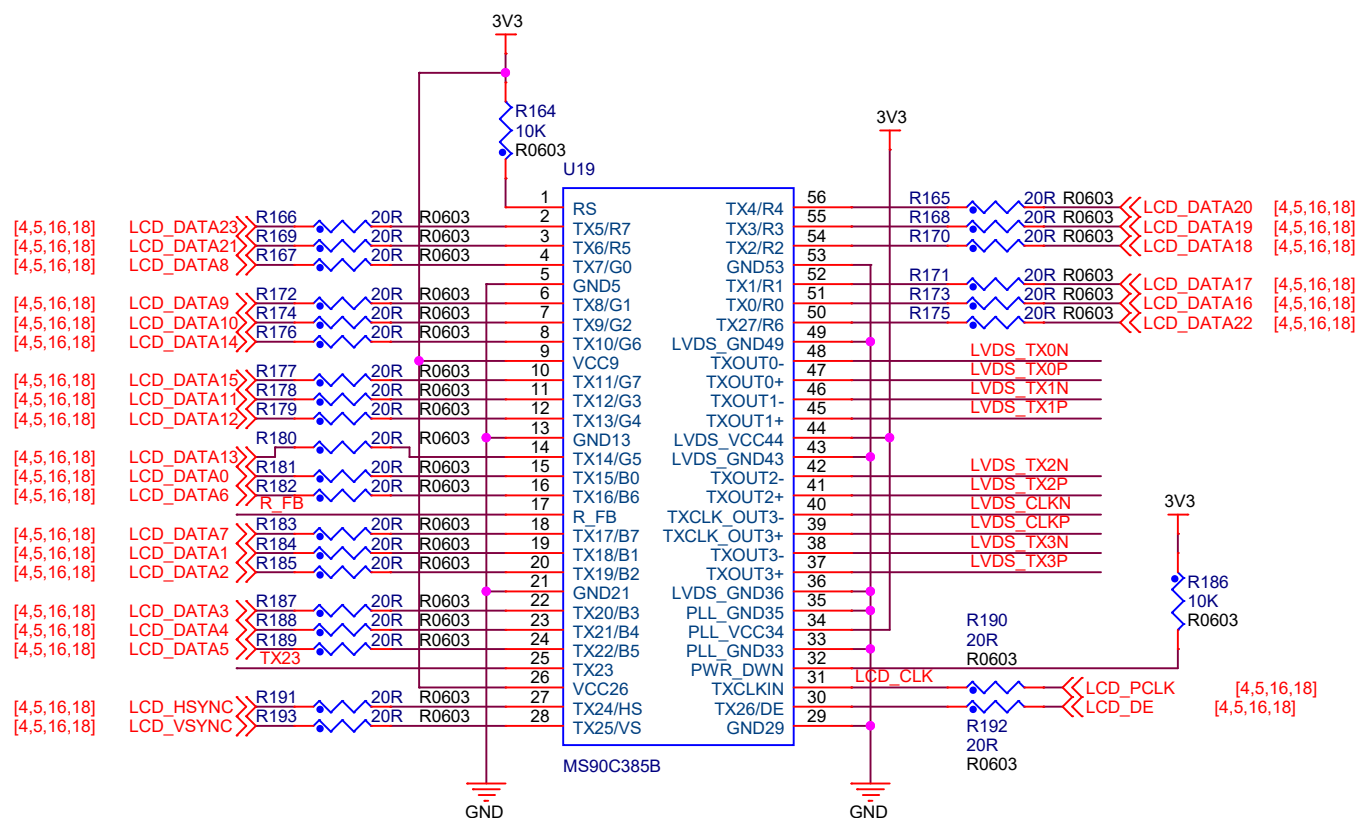
ID悬空时为Device设备，接地为HOST主机



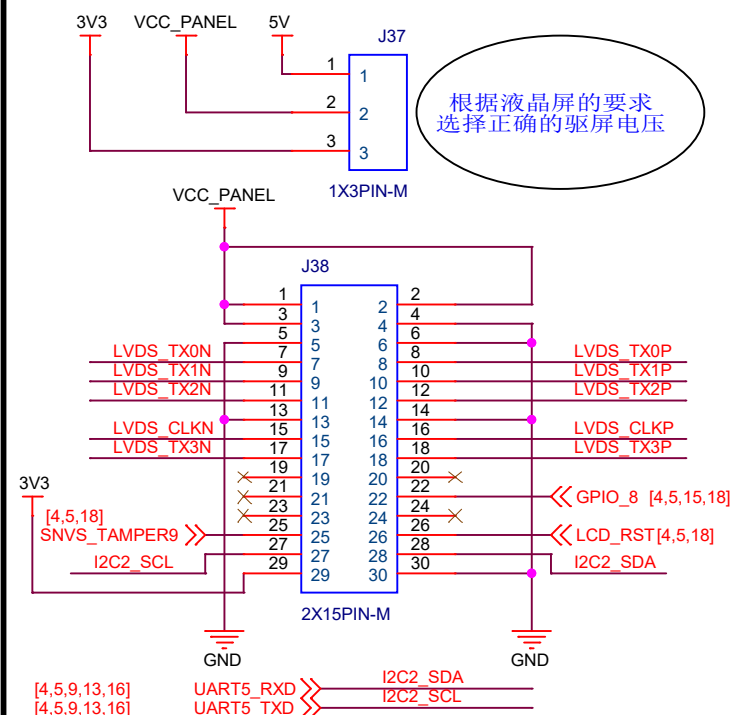
RGB888转LVDS

支持高达1366*768分辨率

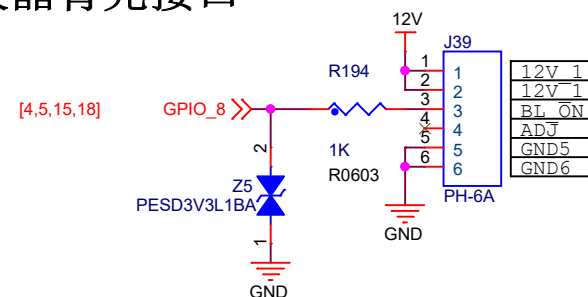
支持单八位的LVDS接口的液晶屏



驱屏接口



液晶背光接口



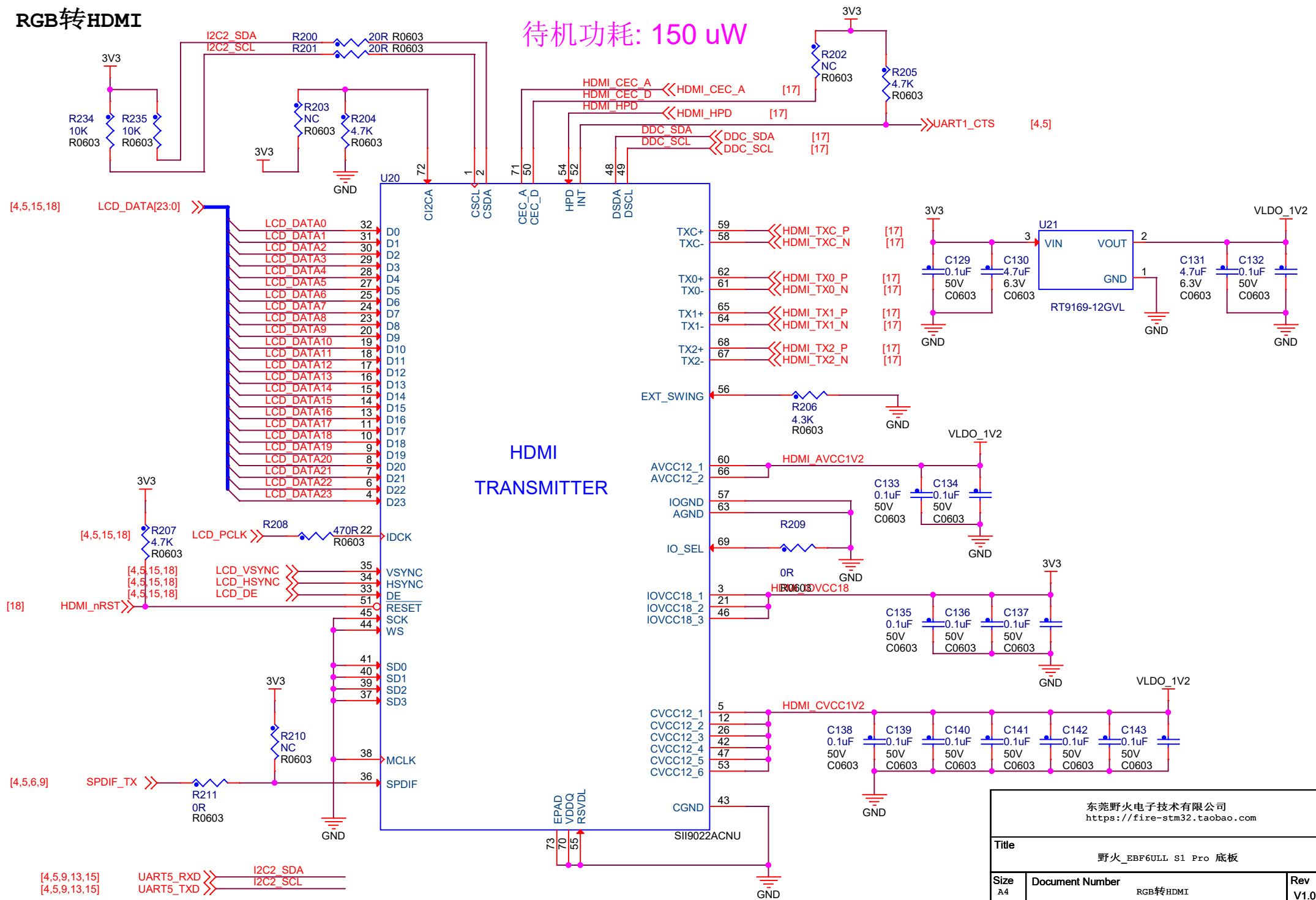
东莞野火电子技术有限公司
<https://fire-stm32.taobao.com>

Title	野火 EBF6ULL S1 Pro 底板
-------	----------------------

Size A4	Document Number RGB转LVDS	Rev V1.0
------------	-----------------------------	-------------

Date: Saturday, November 13, 2021 Sheet 15 of 18

RGB转HDMI

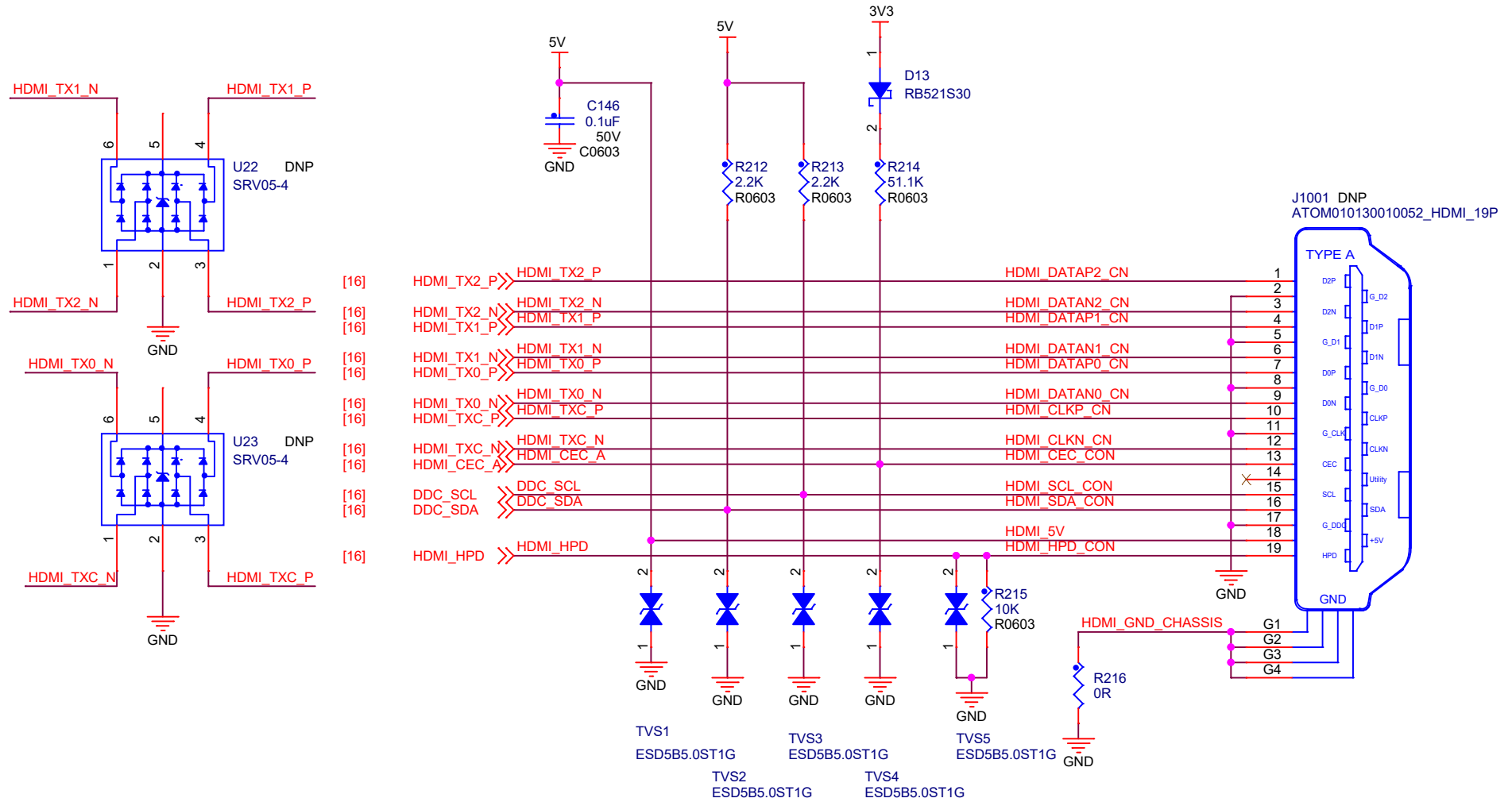


东莞野火电子科技有限公司
<https://fire-stm32.taobao.com>

Title			
野火_EBF6ULL S1 Pro 底板			
Size A4	Document Number		Rev V1.0
	RGB转HDMI		
Date:	Friday, November 12, 2021	Sheet 16 of	18

HDMI连接器

Type A型



东莞野火电子有限公司
<https://fire-stm32.taobao.com>

Title

野火_EBF6ULL S1 Pro 底板

Size
A4

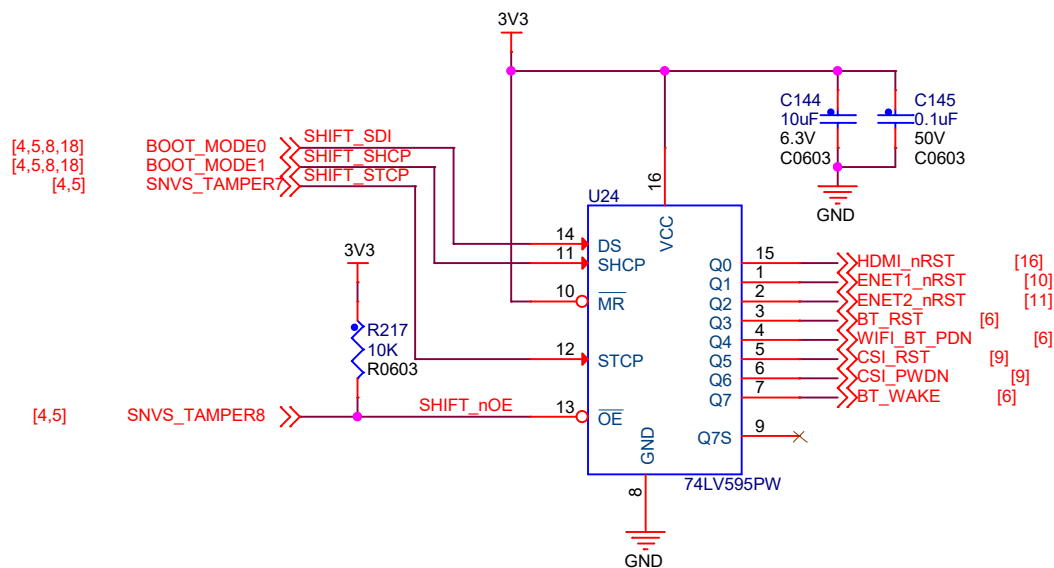
Document Number
HDMI连接器

Rev
V1.0

Date: Friday, November 12, 2021

Sheet 17 of 18

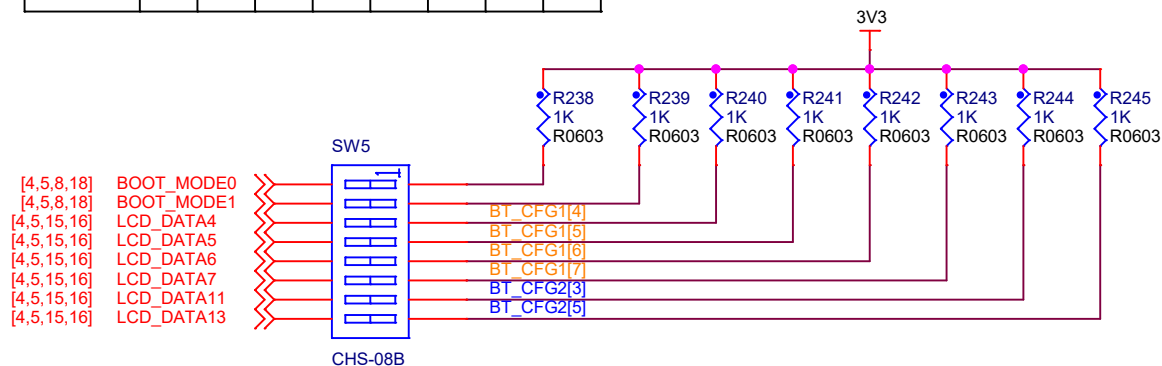
扩展IO



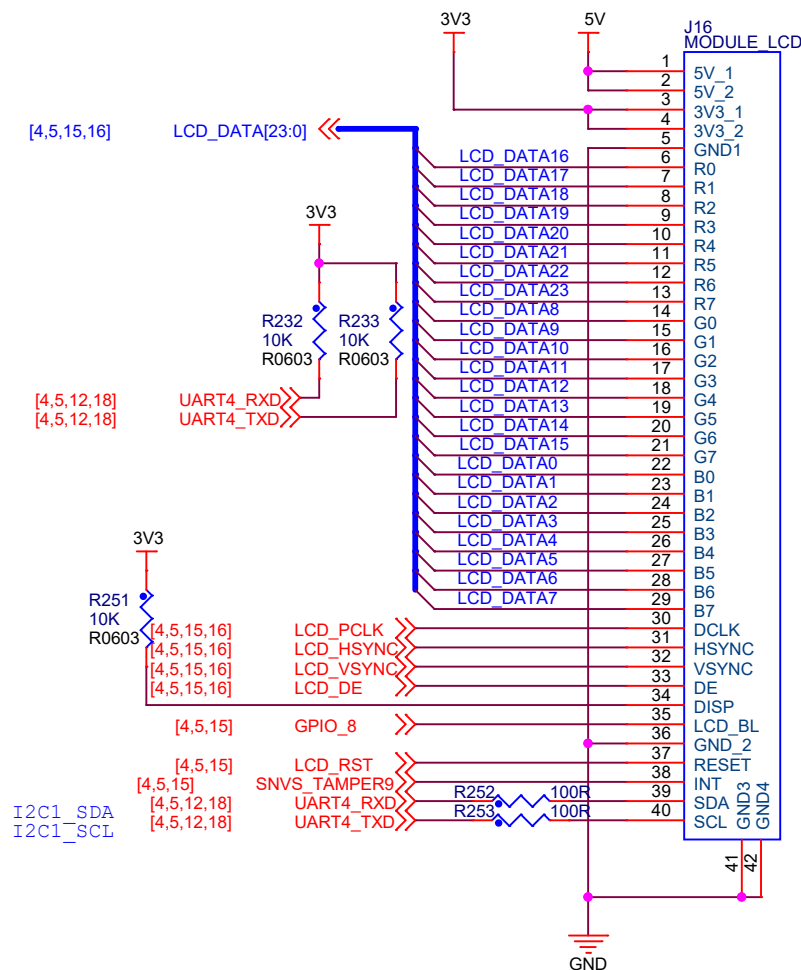
启动设置

拨码开关拨到ON位置为1，反之为0

SW5	1	2	3	4	5	6	7	8
NAND	0	1	1	0	0	1	0	0
EMMC	0	1	0	1	1	0	1	0
SD	0	1	0	0	1	0	0	1
USB	1	0	X	X	X	X	X	X



LCD-FPC接口



东莞野火电子技术有限公司
https://fire-stm32.taobao.com

Title 野火_EBF6ULL S1 Pro 底板		
Size A4	Document Number 扩展IO/启动切换	Rev V1.0
Date: Friday, November 12, 2021	Sheet 18 of 18	